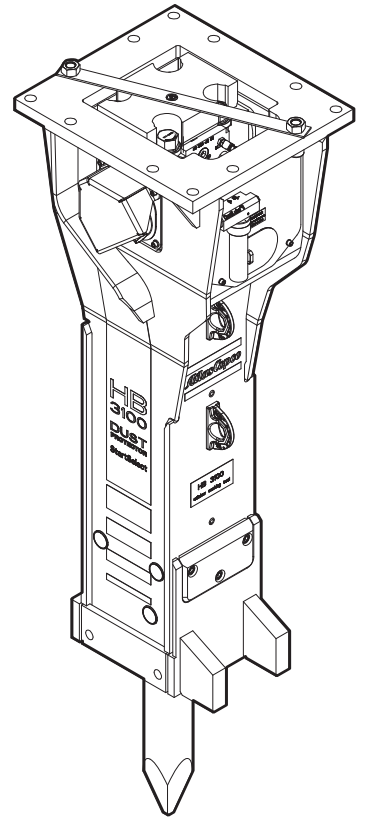


Spare parts list Hydraulic breakers

	Valid from serial number
HB 3100	DEQ130410
HB 3100 DP	DEQ130410



Contents

General note.....	5
Spare parts list.....	6
Hydraulic breaker HB 3100.....	6
Hydraulic breaker HB 3100 DustProtector.....	8
Percussion unit part 1: cylinder cover.....	10
Percussion unit part 2: cylinder.....	12
Percussion unit part 3: lower breaker part.....	14
Connecting kit for ContiLube® II.....	16
StartSelect - AutoStart or AutoStop.....	18
Optional parts.....	20
Tightening torques.....	21
Working tools.....	22
HB 3100.....	22
HB 3100 DustProtector.....	23
Accessories.....	24
Hydraulic hoses.....	24
Optional equipment.....	24
Kits.....	25
Label kit HB 3100.....	25
Label kit HB 3100 DustProtector.....	26
Seal kit.....	27
Seal kit for swivel joint (ContiLube® II).....	27
Plastic parts kit.....	27
Tensioning bolt kit.....	28
DustProtector kit.....	28
Noise protection kit.....	28
Lower breaker part kit (steel).....	28
Lower breaker part kit (bronze).....	29
Lower breaker part kit DustProtector (steel).....	29
Lower breaker part kit DustProtector (bronze).....	30
Fastening screw kit.....	30
Accumulator repair kit.....	30
Dimensions.....	31
Dimensions HB 3100.....	31
Dimensions HB 3100 DustProtector.....	32

General note

This spare parts list applies to the following:

Part number	Description
3363 1056 51	Hydraulic breaker HB 3100
3363 1056 49	Hydraulic breaker HB 3100 DustProtector

Use only authorized parts. Any damage or malfunction caused by the use of unauthorized parts is not covered by Warranty or Product Liability. Any unauthorized use or copying of the contents or any part thereof is prohibited. This applies in particular to trademarks, model denominations, part numbers, and drawings.

Instructions for use

This spare parts list contains no safety regulations and is merely intended to assist in the ordering of spare parts.

For information on operating, servicing, or repairing, the relevant Safety and operating instructions must be consulted at all costs.

Please observe the safety instructions listed in the relevant Safety and operating instructions!

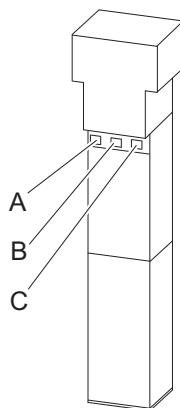
Instructions of ordering

It is essential to indicate the serial number of the hydraulic attachment when ordering spare parts!

Please note the full identification number of your hydraulic attachment. This code can be found on the cylinder.

Determine the quantity of individual parts which are required and need to be ordered. The order must indicate the following details:

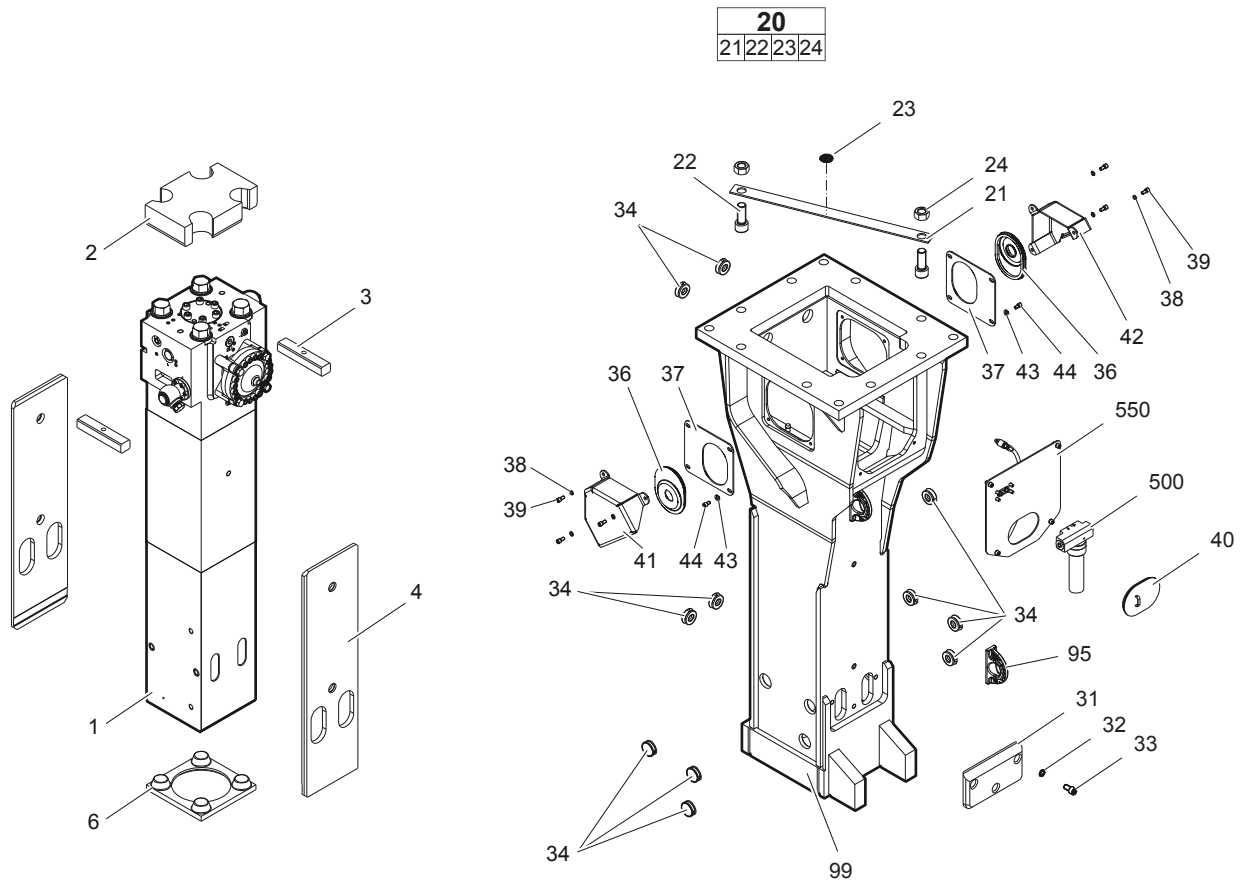
- full identification code of the hydraulic attachment
- required quantity
- part number
- description



- A. Cylinder number
- B. Type
- C. Serial number

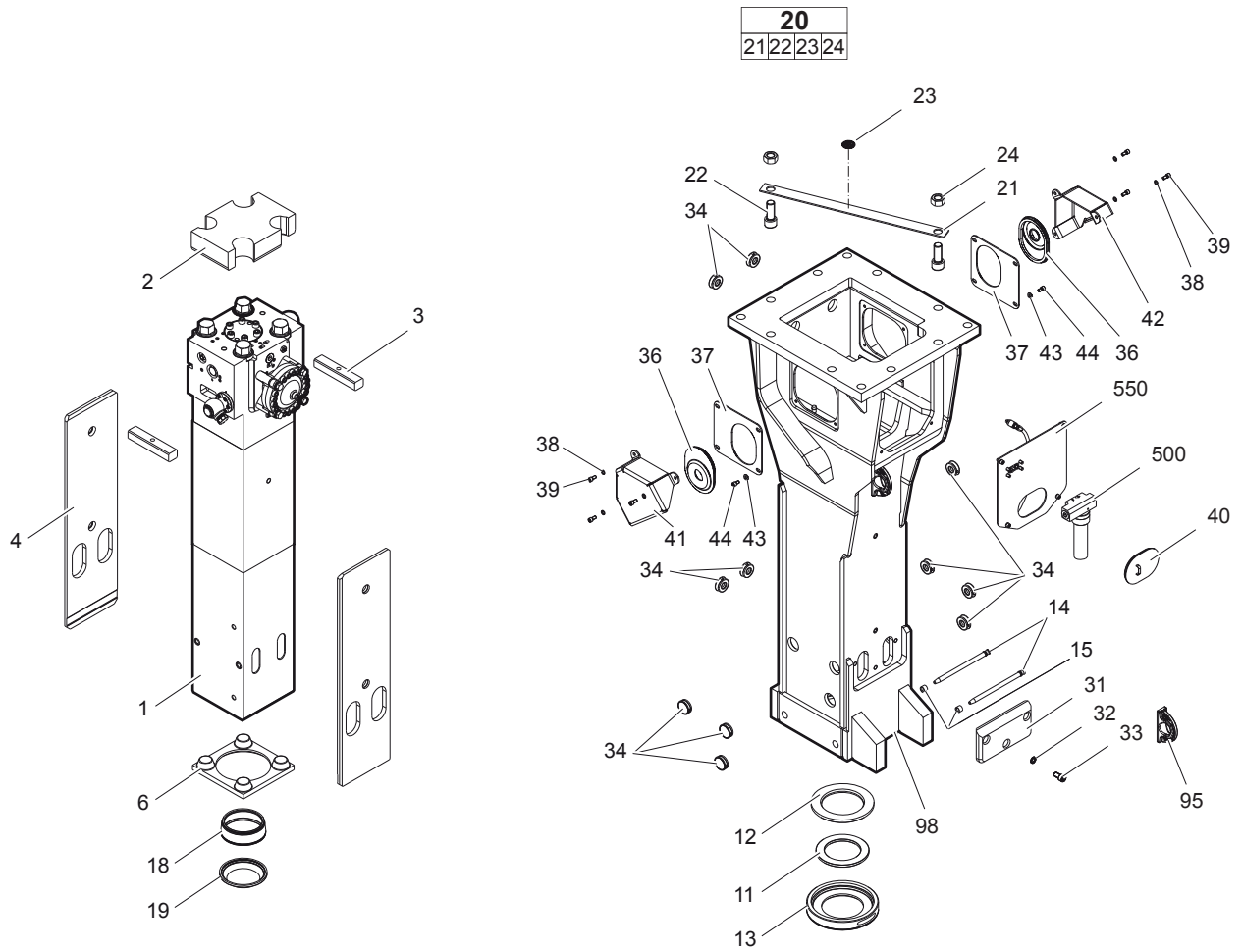
Spare parts list

Hydraulic breaker HB 3100



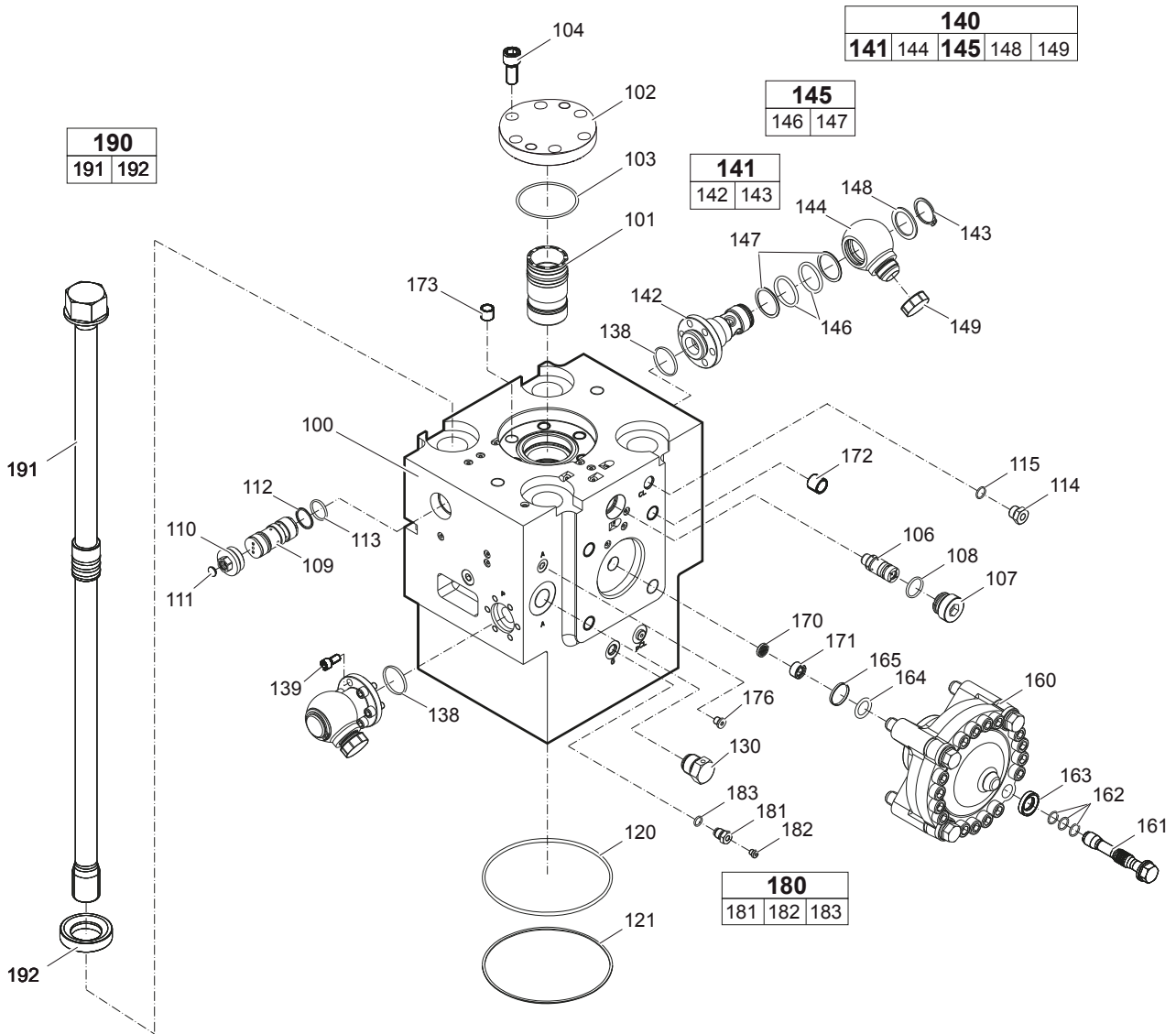
No.	Description	Remark	Quantity	Part number
1	Percussion unit	see separate chapter	1	-
2	Elastic pad		1	3361 8476 35
3	Shock absorber		2	3363 1040 73
4	Guide plate		2	3363 1056 99
6	Plate		1	3363 0863 99
20(21-24)	Transport safety device complete		1	3363 0948 26
21	Transport safety device		1	-
22	Allen screw		2	3360 1141 51
23	Label transport safety device		1	3363 0918 72
24	Nut		2	3360 1032 55
31	Plate		1	3363 1067 43
32	Pair of lock washers		3	3361 8507 48
33	Allen screw		3	3363 0830 07
34	Plug		11	3363 1119 12
36	Cover		2	3363 0311 81
37	Plate		2	3363 0948 19
38	Pair of lock washers		6	3361 8505 96
39	Allen screw		6	3360 1037 50
40	Cover		1	3363 0926 97
41	Swivel joint cover		1	3363 1113 35
42	Swivel joint cover		1	3363 1113 33
43	Pair of lock washers		2	3363 1112 96
44	Allen screw		2	3362 3284 80
95	Lifting eye	professional welding process necessary	2	3363 1119 95
99	Breaker box		1	3363 1032 97
500	ContiLube® II	see separate <i>Safety and operating instructions</i>	1	3363 0671 23
550	Connecting kit for ContiLube® II	see separate chapter	1	3363 0948 46

Hydraulic breaker HB 3100 DustProtector



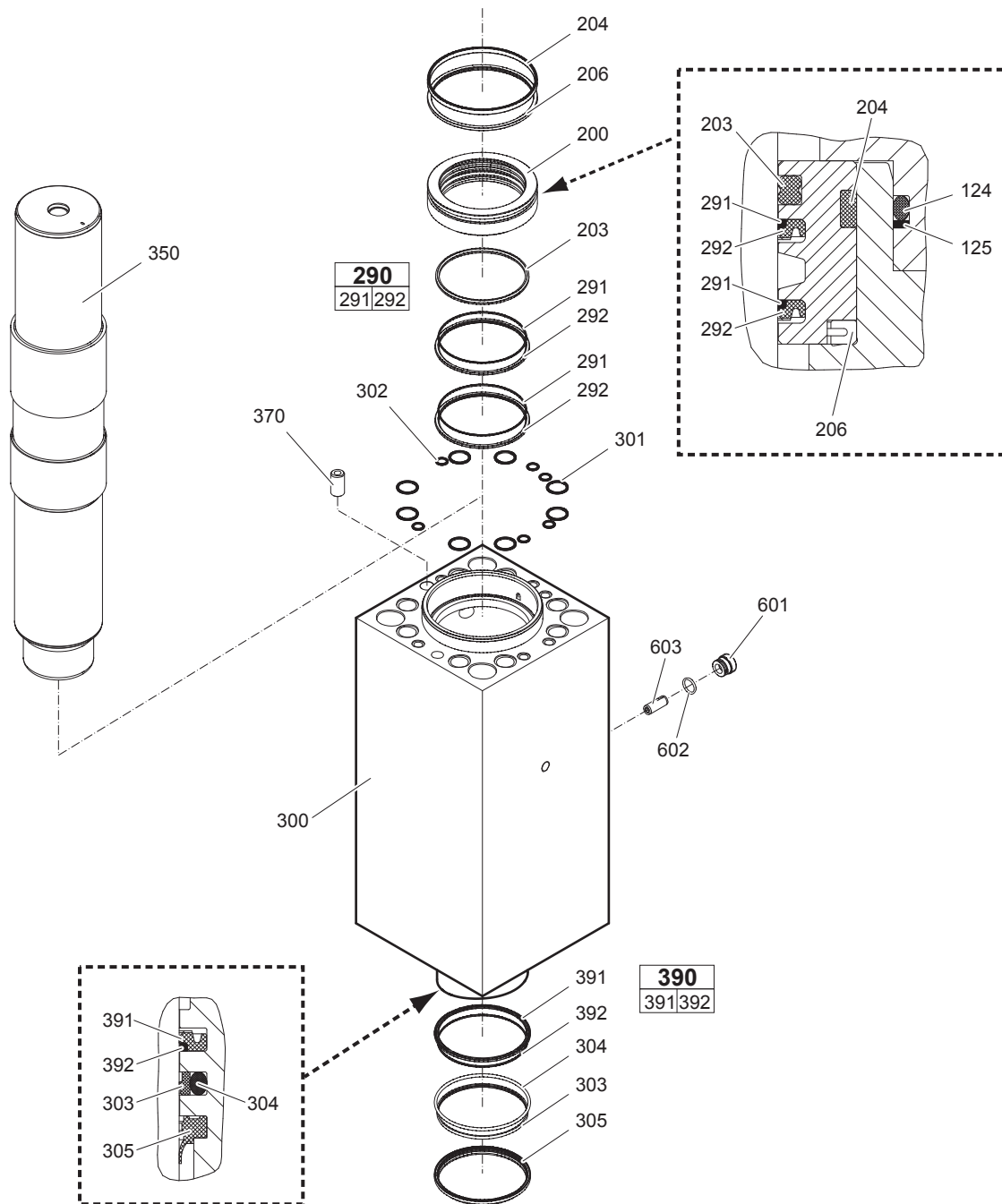
No.	Description	Remark	Quantity	Part number
1	Percussion unit	see separate chapter Note: When ordering a percussion unit for DustProtector version it is imperative to order additionally the base for wiper (no. 18) and the wiper (no. 19).	1	-
2	Elastic pad		1	3361 8476 35
3	Shock absorber		2	3363 1040 73
4	Guide plate		2	3363 1056 99
6	Plate		1	3363 0863 99
11	Floating ring	tribolid steel see chapter <i>Optional parts</i>	1	3363 0706 64
12	Counter ring		1	3363 0337 23
13	Guide ring		1	3363 0337 19
14	Bolt		2	3363 0706 43
15	Locking bush		2	3361 8543 63
18	Base for wiper		1	3363 0886 45
19	Wiper		1	3363 0669 72
20(21-24)	Transport safety device complete		1	3363 0948 26
21	Transport safety device		1	-
22	Allen screw		2	3360 1141 51
23	Label transport safety device		1	3363 0918 72
24	Nut		2	3360 1032 55
31	Plate		1	3363 1067 43
32	Pair of lock washers		3	3361 8507 48
33	Allen screw		3	3363 0830 07
34	Plug		11	3363 1119 12
36	Cover		2	3363 0311 81
37	Plate		2	3363 0948 19
38	Pair of lock washers		6	3361 8505 96
39	Allen screw		6	3360 1037 50
40	Cover		1	3363 0926 97
41	Swivel joint cover		1	3363 1113 35
42	Swivel joint cover		1	3363 1113 33
43	Pair of lock washers		2	3363 1112 96
44	Allen screw		2	3362 3284 80
95	Lifting eye	professional welding process necessary	2	3363 1119 95
98	Breaker box		1	3363 1067 39
500	ContiLube® II	see separate <i>Safety and operating instructions</i>	1	3363 0671 23
550	Connecting kit for ContiLube® II	see separate chapter	1	3363 0948 46

Percussion unit part 1: cylinder cover



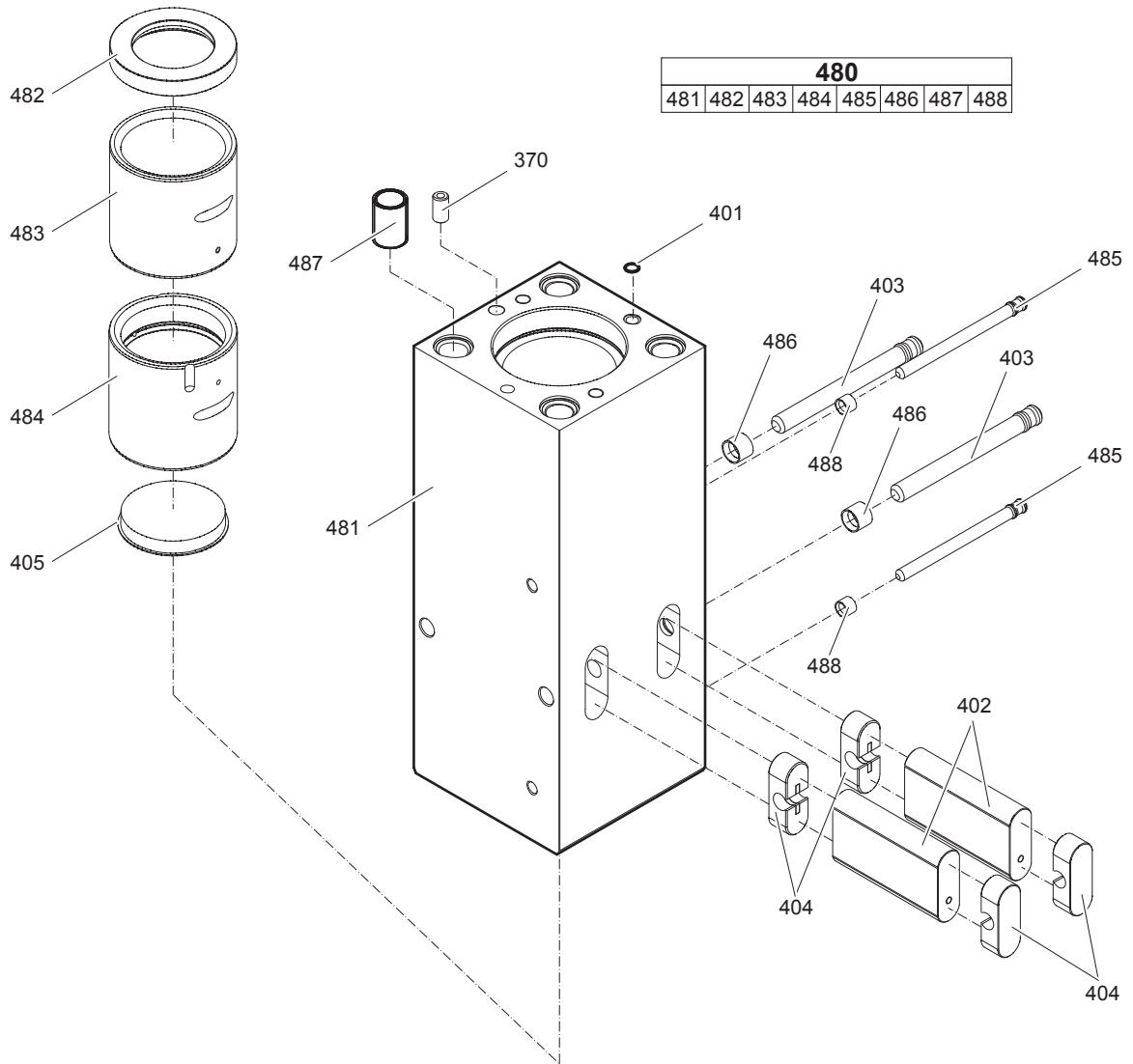
No.	Description	Remark	Quantity	Part number
100	Cylinder cover	with no. 170 - 176	1	3363 1064 35
101	Main control valve		1	3363 0885 69
102	Cover		1	3361 3315 55
103	O-ring		1	3360 3143 75
104	Allen screw		6	3360 1037 76
106	Frequency switching valve	AutoControl	1	3363 0354 53
107	Threaded plug		1	3363 0354 25
108	O-ring		1	3360 3143 70
109	Safety valve	PowerAdapt Only in exchange for the part to be replaced. Consult the Atlas Copco Customer Center/Dealer in your area.	1	3363 0852 70
110	Threaded plug		1	3363 0870 86
111	Threaded plug		1	3363 0870 87
112	O-ring		1	3363 1104 01
113	Back-up ring		1	3363 0870 85
114	Connecting screw		1	3361 8546 57
115	O-ring		1	3360 4781 71
120	O-ring		1	3361 0318 45
121	Back-up ring		1	3363 0874 82
130	Non-return valve		1	3361 8545 11
138	O-ring		2	3360 3143 73
139	Allen screw		12	3360 1037 50
140(141,144,145,148-149)	Swivel joint complete		2	3362 2699 99
141(142-143)	Adapter complete		1	3363 1034 71
142	Adapter		1	-
143	Snapring		1	3363 1031 33
144	Adapter		1	3361 3566 43
145(146-147)	Seal kit		1	3361 8504 22
146	O-ring		2	-
147	Back-up ring		2	-
148	Disk		1	3361 3566 45
149	Cap		1	3361 3534 89
160	HP-accumulator		1	3363 0949 81
161	Fastening screw	each fastening screw with 3 o-rings no. 162	4	3363 1131 01
162	Service kit O-rings	12 o-rings for all 4 fastening screws no. 161	1	3363 1147 30
163	Washer		4	3363 1000 49
164	O-ring		1	3360 3143 64
165	Back-up ring		1	3360 3280 46
170	Strainer disk		1	3361 8441 13
171	Threaded plug		1	3361 8441 15
172	Threaded insert		4	3361 0315 46
173	Threaded insert		6	3361 0315 29
176	hreaded plug		1	3360 4784 39
180(181-183)	Filling valve complete		1	3363 0872 86
181	Filling valve		1	-
182	Threaded plug		1	3360 4784 26
183	O-ring		1	3360 1751 25
190(191-192)	Tensioning bolt complete		4	3363 1064 21
191	Tensioning bolt		1	3363 1043 81
192	Washer		1	3363 0936 51

Percussion unit part 2: cylinder



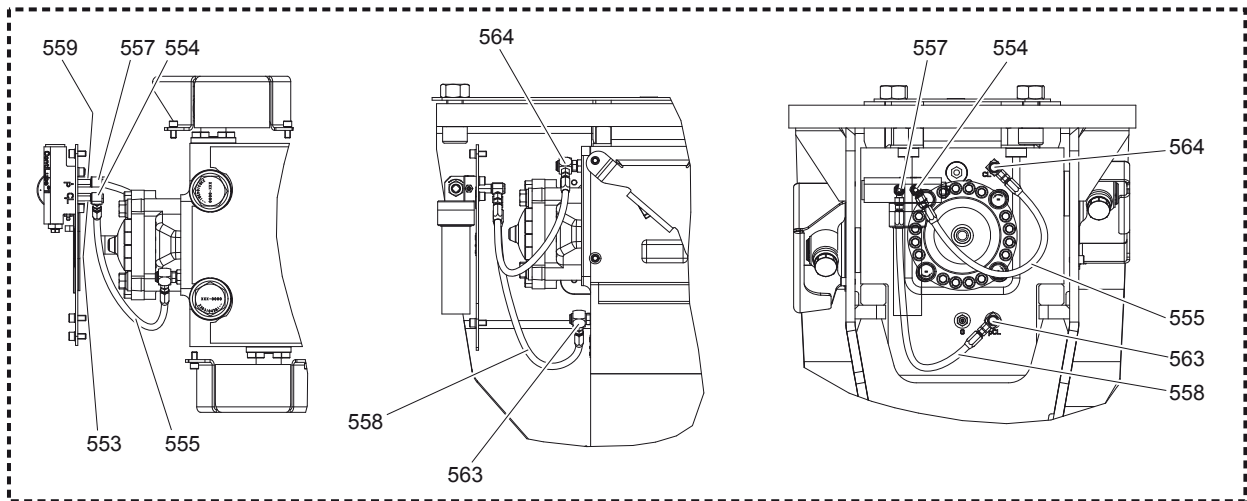
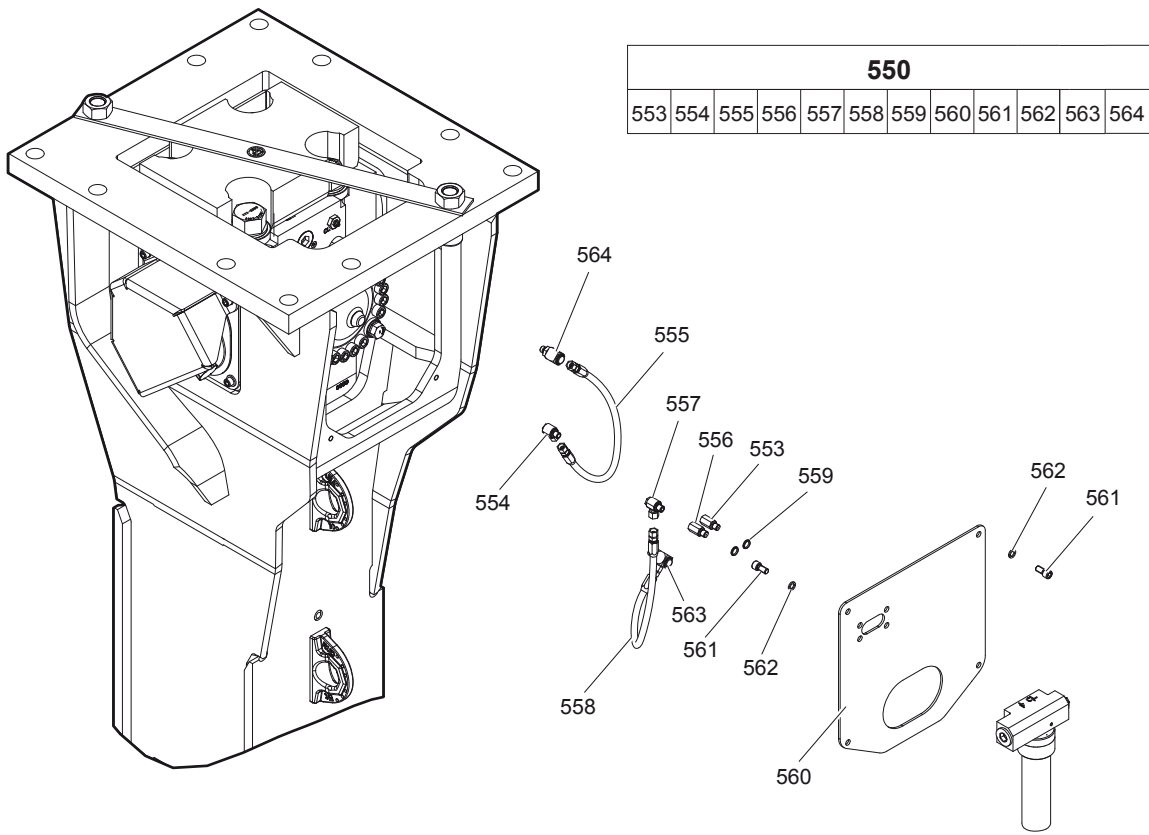
No.	Description	Remark	Quantity	Part number
200	Seal bush		1	3363 0856 12
203	Seal		1	3361 3330 17
204	Seal		1	3363 0981 36
206	Ring		1	3363 0977 93
290(291-292)	Seal kit		2	3363 0835 91
291	Back-up ring		1	-
292	Seal		1	-
300	Cylinder	with no. 601 - 603	1	3363 0855 16
301	Seal		8	3362 2672 81
302	Seal		6	3362 2675 85
303	Seal		1	3361 3330 18
304	O-ring		1	3361 3330 19
305	Wiper		1	3363 0836 70
350	Percussion piston		1	3361 8477 11
370	Lock pin		1	3360 9214 13
390(391-392)	Seal kit		1	3363 0835 92
391	Seal		1	-
392	Back-up ring		1	-
601	Plug		1	3363 0825 93
602	O-ring		1	3363 0832 45
603	Valve	StartSelect	1	3363 0825 05

Percussion unit part 3: lower breaker part



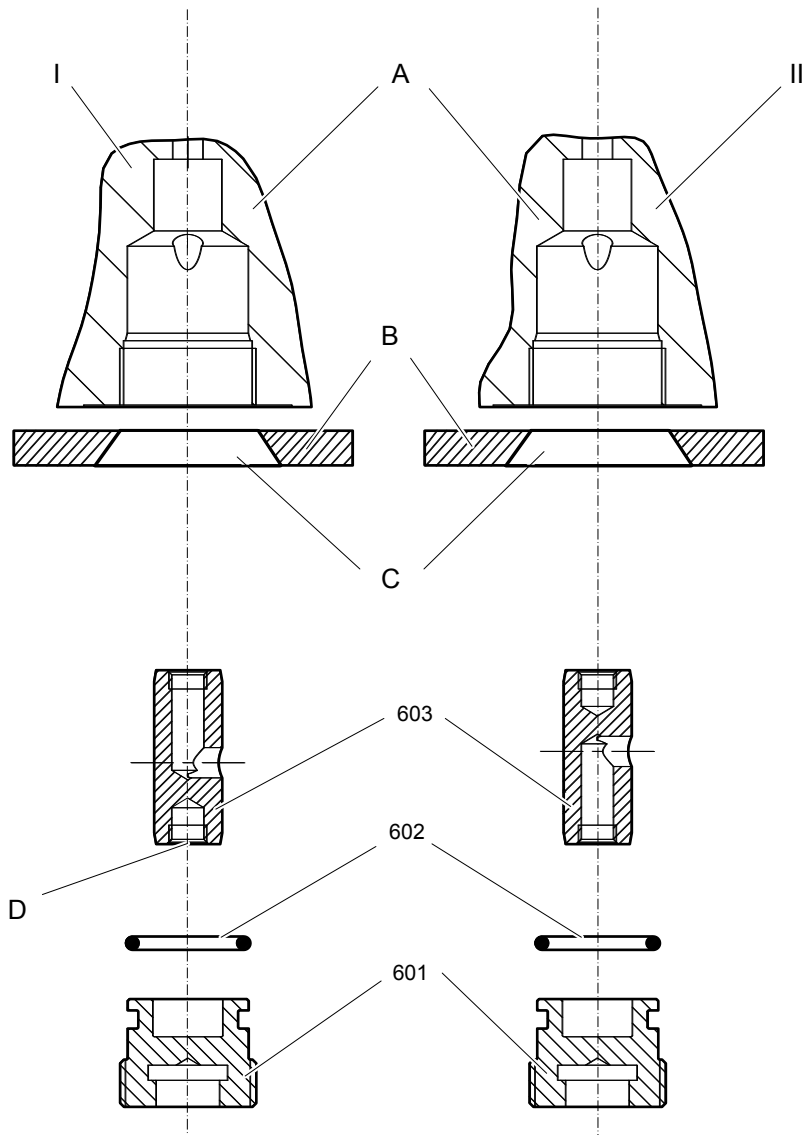
No.	Description	Remark	Quantity	Part number
370	Lock pin		1	3360 9214 13
401	Seal		1	3362 2675 86
402	Retainer bar		2	3361 3322 27
403	Bolt		2	3362 2615 41
404	Plug		4	3362 2629 21
405	Protective cap		1	3363 0918 62
480(481-488)	Lower breaker part comp	Note: When ordering a lower breaker part for DustProtector version it is imperative to order additionally the base for wiper (no. 18) and the wiper (no. 19).	1	3363 0895 02
481	Lower breaker part		1	-
482	Impact ring		1	3363 0690 81
483	Wear bush		1	3363 0696 63
484	Wear bush	steel bronze see chapter <i>Optional parts</i>	1	3363 0886 55
485	Bolt		2	3361 8543 47
486	Locking bush		2	3362 2604 33
487	Threaded insert		4	3363 0854 99
488	Locking bush		2	3361 8543 63

Connecting kit for ContiLube® II



No.	Description	Remark	Quantity	Part number
550(553-564)	Connecting kit		1	3363 0948 46
553	Adapter	secure with Loctite 243	1	3363 0668 87
554	Fitting	secure with Loctite 243	1	3363 0662 33
555	Hydraulic hose	Grease line secure with Loctite 243 Route the hydraulic hoses as shown on the drawing. It must be ensured that the hydraulic hoses can move freely and are not in contact at any point.	1	3363 0838 74
556	Adapter	secure with Loctite 243	1	3363 0687 45
557	Fitting	secure with Loctite 243	1	3363 0662 34
558	Hydraulic hose	Oil line secure with Loctite 243 Route the hydraulic hoses as shown on the drawing. It must be ensured that the hydraulic hoses can move freely and are not in contact at any point.	1	3363 0838 78
559	Seal		2	3363 0669 51
560	Support		1	3363 1067 44
561	Allen screw	secure all 4 allen screws with Loctite 243 screwed in the ContiLube® II	8	3360 1037 50
562	Pair of lock washers		8	3361 8505 96
563	Fitting	secure with Loctite 243	1	3363 0871 85
564	Fitting	secure with Loctite 243	1	3363 0871 86

StartSelect - AutoStart or AutoStop



No.	Description	Remark	Quantity	Part number
601	Plug		1	3363 0825 93
602	O-ring		1	3363 0832 45
603	Valve	StartSelect	1	3363 0825 05

I = AutoStop setting

II = AutoStart setting (standard setting on delivery)

A. Port bore in cylinder

B. Wall of breaker box

C. Plug of breaker box

D. M 10 thread (both ends) for mounting

The position of the StartSelect unit is shown on the percussion unit illustrations.

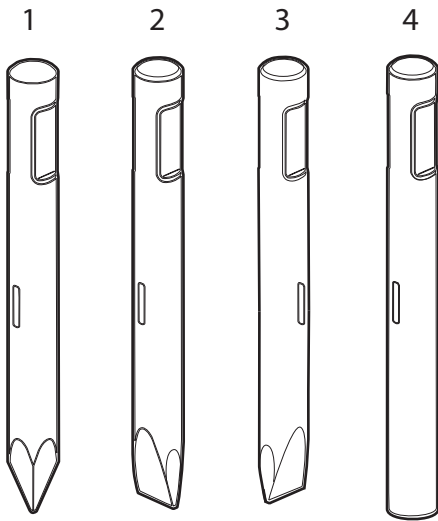
Optional parts

No.	Description	Remark	Quantity	Part number
11	Floating ring	steel	1	3363 0696 69
484	Wear bush	bronze	1	3363 0885 09

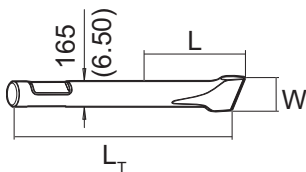
Tightening torques

No.	Description	Tightening torque	Remark
39	Allen screw	85 Nm	Allen key size 10
44	Allen screw	85 Nm	Allen key size 10
104	Allen screw	380 Nm	Allen key size 17
110	Threaded plug	300 Nm	Socket spanner size 24
114	Threaded plug	300 Nm	Allen key size 22
130	Non-return valve	200 Nm	Socket spanner size 41
139	Allen screw	80 Nm	Allen key size 10
161	Fastening screw		Socket spanner size 30 Tightening regulations: 1. Treat the threads and threaded inserts for the fastening screws with an Anti-Seize agent. 2. Treat the surfaces between the fastening screw head, washer, and HP-accumulator cover with Anti-Seize. 3. Place on the HP-accumulator, and tighten the fastening screws by hand in a crosswise fashion. 4. Pretighten the fastening screws to 80 Nm, proceeding in a crosswise fashion, 5. then tighten each fastening screw through 30° in a crosswise fashion, 6. finally tighten each fastening screw again through 60° in a crosswise fashion.
181	Filling valve	130 Nm	Socket spanner size 22
182	Threaded plug	20 Nm	Allen key size 5
191	Tensioning bolt		Torque wrench or Power wrench size 65 1. Pretighten the tensioning bolts to 500 Nm, proceeding in a crosswise fashion, 2. then tighten each tensioning bolt through 120° (2 sides of hexagonal head) in a crosswise fashion, 3. finally tighten each tensioning bolt again through 180° (3 sides of hexagonal head) in a crosswise fashion.
553	Adapter	45 Nm	Open-ended wrench size 19
554	Fitting	45 Nm	Open-ended wrench size 17, 19, 22
555	Hydraulic hose	42 Nm	Open-ended wrench size 19
556	Adapter	55 Nm	Open-ended wrench size 19
557	Fitting	55 Nm	Open-ended wrench size 19, 22
558	Hydraulic hose	16 Nm	Open-ended wrench size 17
561	Allen screw	85 Nm	Allen key size 10
563	Fitting	60 Nm	Open-ended wrench size 19, 22, 27
564	Fitting	50 Nm	Open-ended wrench size 17, 22, 27
601	Plug	200 Nm	Allen key size 17

Working tools



HB 3100



Metric

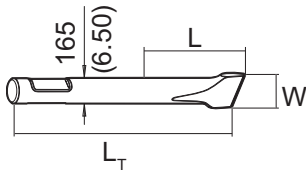
No.	Description	Remark	W (mm)	L (mm)	L _T (mm)	Wt (kg)	Part number
1	Moil point	ClassicLine		595	1300	190.0	3363 0872 58
1	Moil point	ClassicLine		745	1450	223.0	3363 0822 53
1	Moil point	SilverLine		745	1450	222.0	3363 0918 01
2	Chisel (cross)	ClassicLine	165	595	1300	197.0	3363 0859 76
2	Chisel (cross)	ClassicLine	165	745	1450	230.0	3363 0822 55
2	Chisel (cross)	SilverLine	165	745	1450	223.0	3363 0918 00
3	Chisel (parallel)	ClassicLine	165	595	1300	197.0	3363 0942 56
3	Chisel (parallel)	ClassicLine	165	745	1450	230.0	3363 0942 57
4	Blunt tool	ClassicLine		595	1300	210.0	3363 0872 57
4	Blunt tool	ClassicLine		745	1450	243.0	3363 0822 57
4	Blunt tool	SilverLine		745	1450	241.0	3363 0918 02

Imperial

No.	Description	Remark	W (in.)	L (in.)	L _T (in.)	Wt (lb)	Part number
1	Moil point	ClassicLine		23.43	51.18	418.9	3363 0872 58
1	Moil point	ClassicLine		29.33	57.09	491.6	3363 0822 53
1	Moil point	SilverLine		29.33	57.09	489.4	3363 0918 01
2	Chisel (cross)	ClassicLine	6.50	23.43	51.18	434.3	3363 0859 76
2	Chisel (cross)	ClassicLine	6.50	29.33	57.09	507.1	3363 0822 55
2	Chisel (cross)	SilverLine	6.50	29.33	57.09	491.6	3363 0918 00
3	Chisel (parallel)	ClassicLine	6.50	23.43	51.18	434.3	3363 0942 56

No.	Description	Remark	W (in.)	L (in.)	L _T (in.)	Wt (lb)	Part number
3	Chisel (parallel)	ClassicLine	6.50	29.33	57.09	507.1	3363 0942 57
4	Blunt tool	ClassicLine		23.43	51.18	463.0	3363 0872 57
4	Blunt tool	ClassicLine		29.33	57.09	535.7	3363 0822 57
4	Blunt tool	SilverLine		29.33	57.09	531.3	3363 0918 02

HB 3100 DustProtector



Metric

No.	Description	Remark	W (mm)	L (mm)	L _T (mm)	Wt (kg)	Part number
1	Moil point	ClassicLine		550	1300	190.0	3363 0872 58
1	Moil point	ClassicLine		700	1450	223.0	3363 0822 53
1	Moil point	SilverLine		700	1450	222.0	3363 0918 01
2	Chisel (cross)	ClassicLine	165	550	1300	197.0	3363 0859 76
2	Chisel (cross)	ClassicLine	165	700	1450	230.0	3363 0822 55
2	Chisel (cross)	SilverLine	165	700	1450	223.0	3363 0918 00
3	Chisel (parallel)	ClassicLine	165	550	1300	197.0	3363 0942 56
3	Chisel (parallel)	ClassicLine	165	700	1450	230.0	3363 0942 57
4	Blunt tool	ClassicLine		550	1300	210.0	3363 0872 57
4	Blunt tool	ClassicLine		700	1450	243.0	3363 0822 57
4	Blunt tool	SilverLine		700	1450	241.0	3363 0918 02

Imperial

No.	Description	Remark	W (in.)	L (in.)	L _T (in.)	Wt (lb)	Part number
1	Moil point	ClassicLine		21.65	51.18	418.9	3363 0872 58
1	Moil point	ClassicLine		27.56	57.09	491.6	3363 0822 53
1	Moil point	SilverLine		27.56	57.09	489.4	3363 0918 01
2	Chisel (cross)	ClassicLine	6.50	21.65	51.18	434.3	3363 0859 76
2	Chisel (cross)	ClassicLine	6.50	27.56	57.09	507.1	3363 0822 55
2	Chisel (cross)	SilverLine	6.50	27.56	57.09	491.6	3363 0918 00
3	Chisel (parallel)	ClassicLine	6.50	21.65	51.18	434.3	3363 0942 56
3	Chisel (parallel)	ClassicLine	6.50	27.56	57.09	507.1	3363 0942 57
4	Blunt tool	ClassicLine		21.65	51.18	463.0	3363 0872 57
4	Blunt tool	ClassicLine		27.56	57.09	535.7	3363 0822 57
4	Blunt tool	SilverLine		27.56	57.09	531.3	3363 0918 02

Accessories

Hydraulic hoses

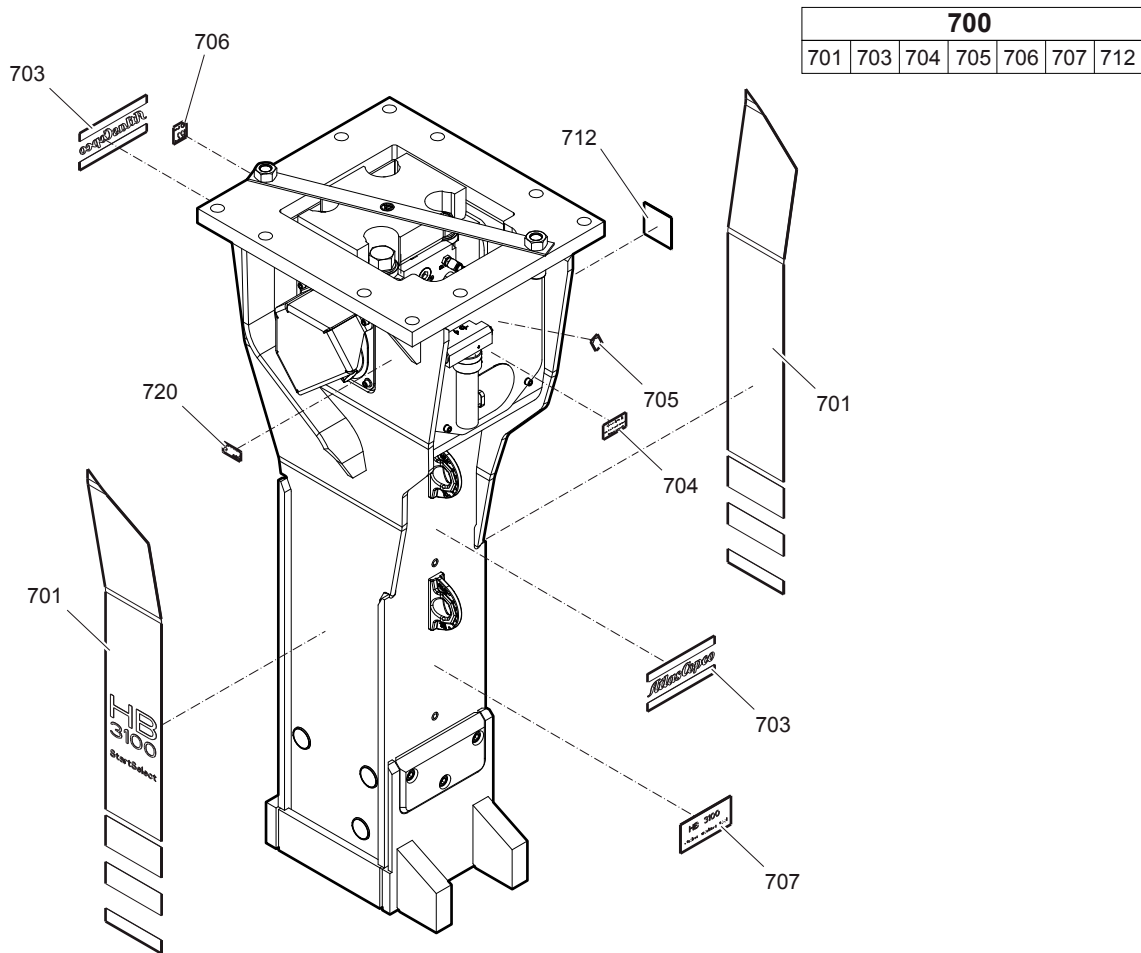
Description	Remark	Quantity	Part number
Hose	I.D. 32 (1 1/4"), both ends JIC 1 5/8", length 2800 mm (110 in.)	2	3361 8538 60
Hose	I.D. 32 (1 1/4"), both ends JIC 1 5/8", length 3500 mm (138 in.)	2	3361 8538 61

Optional equipment

Description	Remark	Quantity	Part number
Chisel paste cartridge for ContiLube® II	12 x 500 g (1.1 lbs)	1	3363 0912 00
Grease gun for cartridge ContiLube® II		1	3363 0345 67
Grease nipple		1	3360 4337 74
Service box no. II with nitrogen cylinder	5 l 1.1 gal (1.32 US gal)	1	3363 0898 45
Service box no. III without nitrogen cylinder		1	3363 0949 40
Test gauge lower wear bush		1	3363 0697 35
Inside callipers upper wear bush		1	3363 0949 52
Adapter plate matching the carrier Consult the Atlas Copco Customer Center/Dealer in your area.		1	-
Base plate with threaded inserts		1	3363 0997 93
Bolt kit		1	3363 0873 04
Base plate with through borings		1	3363 1028 71
Bolt kit		1	3363 0945 76
Allen key	27 mm for bolt kit	1	3360 4789 49
Adapter kit for underwater applications		1	3363 0905 31
Piston retainer		1	3363 0929 85

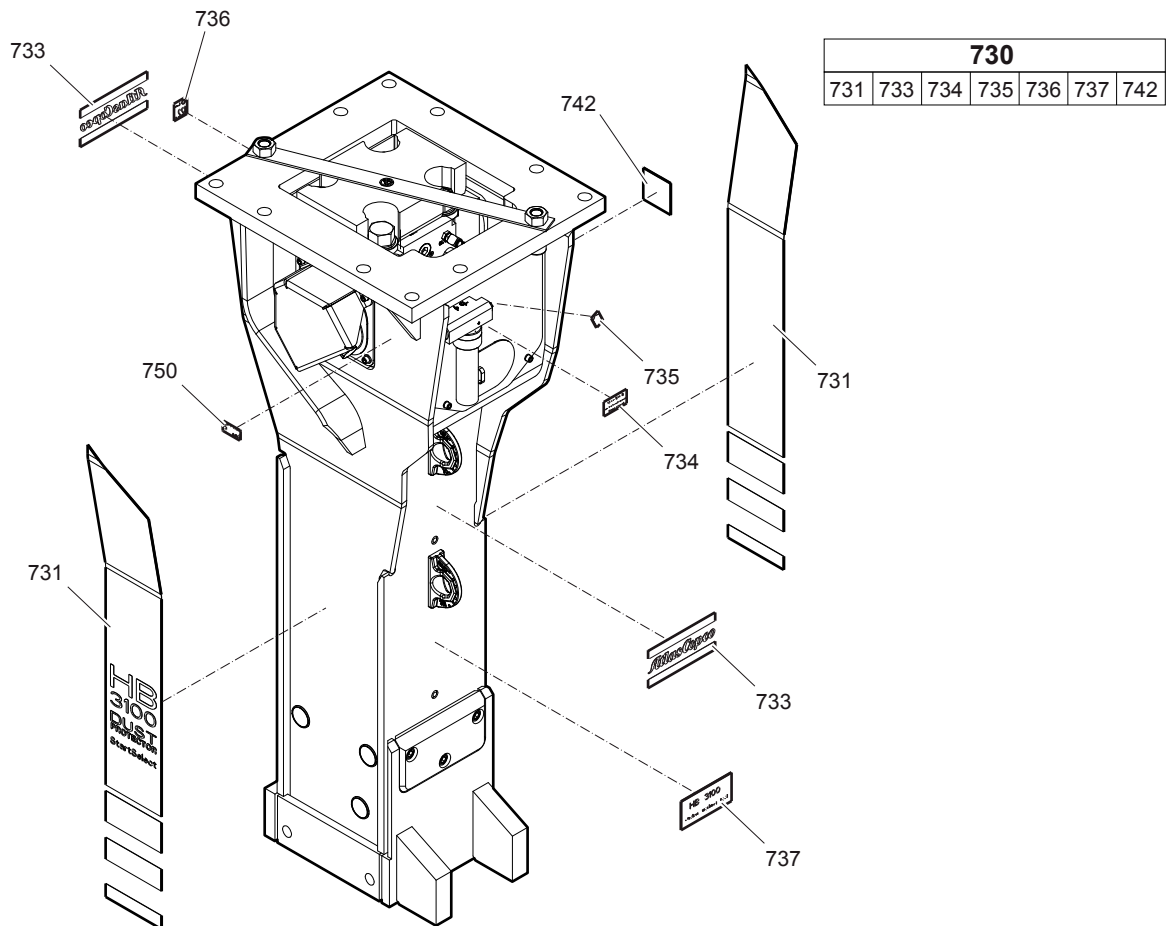
Kits

Label kit HB 3100



No.	Description	Remark	Quantity	Part number
700(701-712)	Label kit HB 3100		1	3363 1064 24
701	Product label	"HB 3100"	2	-
703	Product label	"Atlas Copco"	2	-
704	Label gas pressure		1	-
705	Lubricating symbol		1	-
706	Sound power label		1	-
707	Label working tools		1	-
712	Label AEM		1	-
720	Name plate	Consult the Atlas Copco Customer Center/Dealer in your area.	1	-

Label kit HB 3100 DustProtector



No.	Description	Remark	Quantity	Part number
730(731-742)	Label kit HB 3100 DP		1	3363 1064 25
731	Product label	"HB 3100 DP"	2	-
733	Product label	"Atlas Copco"	2	-
734	Label gas pressure		1	-
735	Lubricating symbol		1	-
736	Sound power label		1	-
737	Label working tools		1	-
742	Label AEM		1	-
750	Name plate	Consult the Atlas Copco Customer Center/Dealer in your area.	1	-

Seal kit

No.	Description	Remark	Quantity	Part number
	Seal kit		1	3363 1064 23
103	O-ring		1	3360 3143 75
108	O-ring		1	3360 3143 70
112	O-ring		1	3363 1104 01
113	Back-up ring		1	3363 0870 85
115	O-ring		1	3360 4781 71
120	O-ring		1	3361 0318 45
121	Back-up ring		1	3363 0874 82
138	O-ring		2	3360 3143 73
145(146-147)	Seal kit		2	3361 8504 22
146	O-ring		2	-
147	Back-up ring		2	-
164	O-ring		1	3360 3143 64
165	Back-up ring		1	3360 3280 46
182	Threaded plug		1	3360 4784 26
183	O-ring		1	3360 1751 25
203	Seal		1	3361 3330 17
204	Seal		1	3363 0981 36
290(291-292)	Seal kit		2	3363 0835 91
291	Back-up ring		1	-
292	Seal		1	-
301	Seal		8	3362 2672 81
302	Seal		6	3362 2675 85
303	Seal		1	3361 3330 18
304	O-ring		1	3361 3330 19
305	Wiper		1	3363 0836 70
390(391-392)	Seal kit		1	3363 0835 92
391	O-ring		1	-
392	Back-up ring		1	-
401	Seal		1	3362 2675 86
602	O-ring		1	3363 0832 45

Seal kit for swivel joint (ContiLube® II)

No.	Description	Remark	Quantity	Part number
	Seal kit		1	3363 0917 32

Plastic parts kit

No.	Description	Remark	Quantity	Part number
	Plastic parts kit		1	3363 1032 96
2	Elastic pad		1	3361 8476 35
3	Shock absorber		2	3363 1040 73
4	Guide plate		2	3363 1056 99
6	Plate		1	3363 0863 99

Tensioning bolt kit

No.	Description	Remark	Quantity	Part number
	Tensioning bolt kit		1	3363 1064 26
191	Tensioning bolt		2	3363 1043 81
192	Washer		2	3363 0936 51
487	Threaded insert		2	3363 0854 99
	Anti-Seize 120 g		1	3363 0943 00

DustProtector kit

No.	Description	Remark	Quantity	Part number
	DustProtector kit		1	3363 0943 88
11	Floating ring		1	3363 0706 64
12	Counter ring		1	3363 0337 23
13	Guide ring		1	3363 0337 19
14	Bolt		2	3363 0706 43
15	Locking bush		2	3361 8543 63

Noise protection kit

No.	Description	Remark	Quantity	Part number
	Noise protection kit		1	3363 1064 96
34	Plug		11	3363 1119 12
36	Cover		2	3363 0311 81
40	Cover		1	3363 0926 97

Lower breaker part kit (steel)

No.	Description	Remark	Quantity	Part number
	Lower breaker part kit	HB 3100 with lower wear bush steel	1	3363 1034 06
402	Retainer bar		2	3361 3322 27
403	Bolt		2	3362 2615 41
404	Plug		4	3362 2629 21
482	Impact ring		1	3363 0690 81
483	Wear bush		1	3363 0696 63
484	Wear bush	steel	1	3363 0886 55
485	Bolt		2	3361 8543 47
486	Locking bush		2	3362 2604 33
488	Locking bush		2	3361 8543 63
	Chisel paste		1	3315 0381 00
	Test gauge		1	3363 0697 35

Lower breaker part kit (bronze)

No.	Description	Remark	Quantity	Part number
	Lower breaker part kit	HB 3100 with lower wear bush bronze	1	3363 0943 75
402	Retainer bar		2	3361 3322 27
403	Bolt		2	3362 2615 41
404	Plug		4	3362 2629 21
482	Impact ring		1	3363 0690 81
483	Wear bush		1	3363 0696 63
484	Wear bush	bronze	1	3363 0885 09
485	Bolt		2	3361 8543 47
486	Locking bush		2	3362 2604 33
488	Locking bush		2	3361 8543 63
	Chisel paste		1	3315 0381 00
	Test gauge		1	3363 0697 35

Lower breaker part kit DustProtector (steel)

No.	Description	Remark	Quantity	Part number
	Lower breaker part kit	HB 3100 DustProtector with lower wear bush steel	1	3363 1034 07
18	Base for wiper		1	3363 0886 45
19	Wiper		1	3363 0669 72
402	Retainer bar		2	3361 3322 27
403	Bolt		2	3362 2615 41
404	Plug		4	3362 2629 21
482	Impact ring		1	3363 0690 81
483	Wear bush		1	3363 0696 63
484	Wear bush	steel	1	3363 0886 55
485	Bolt		2	3361 8543 47
486	Locking bush		2	3362 2604 33
488	Locking bush		2	3361 8543 63
	Chisel paste		1	3315 0381 00
	Test gauge		1	3363 0697 35

Lower breaker part kit DustProtector (bronze)

No.	Description	Remark	Quantity	Part number
	Lower breaker part kit	HB 3100 DustProtector with lower wear bush bronze	1	3363 0943 76
18	Base for wiper		1	3363 0886 45
19	Wiper		1	3363 0669 72
402	Retainer bar		2	3361 3322 27
403	Bolt		2	3362 2615 41
404	Plug		4	3362 2629 21
482	Impact ring		1	3363 0690 81
483	Wear bush		1	3363 0696 63
484	Wear bush	bronze	1	3363 0885 09
485	Bolt		2	3361 8543 47
486	Locking bush		2	3362 2604 33
488	Locking bush		2	3361 8543 63
	Chisel paste		1	3315 0381 00
	Test gauge		1	3363 0697 35

Fastening screw kit

No.	Description	Remark	Quantity	Part number
	Fastening screw kit		1	3363 1034 87
161	Fastening screw		4	3363 1131 01
162	Washer		4	3363 1000 49
172	Threaded insert		4	3361 0315 46

Accumulator repair kit

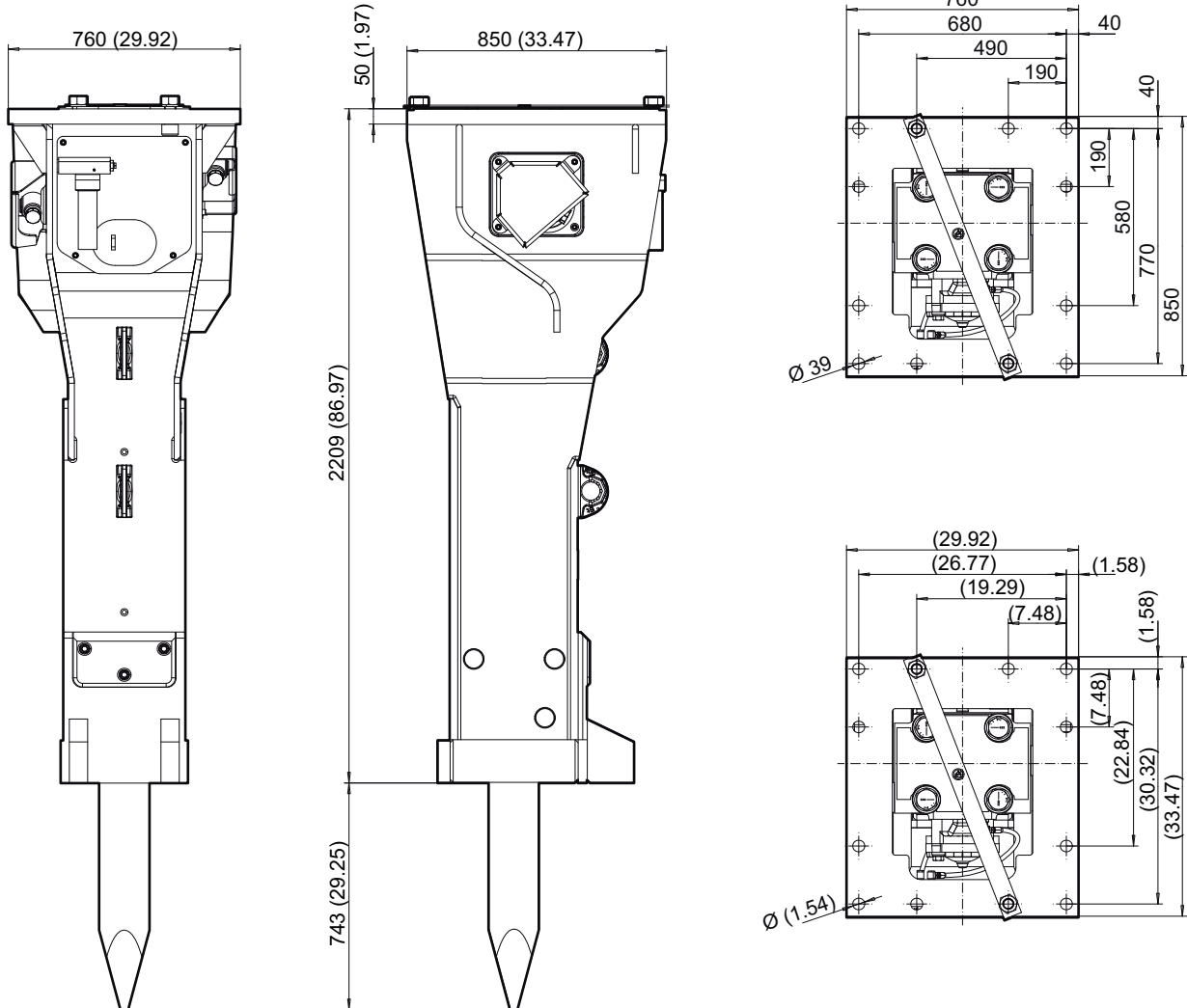
Accumulators are pressure containers in the context of the European Pressure Equipment Directive 97/23/EC. You have to observe all safety instructions comply with the laws and all national/regional regulations of your country if you repair accumulators.

No.	Description	Remark	Quantity	Part number
	Accumulator repair kit		1	3363 0898 50
	Diaphragm		1	3361 3290 22
	Filling screw		1	3360 3322 59
	O-ring		1	3360 3144 60
	Protective cap		1	3361 3350 25
	O-ring		1	3360 3143 64
	Back-up ring		1	3360 3280 46

Dimensions

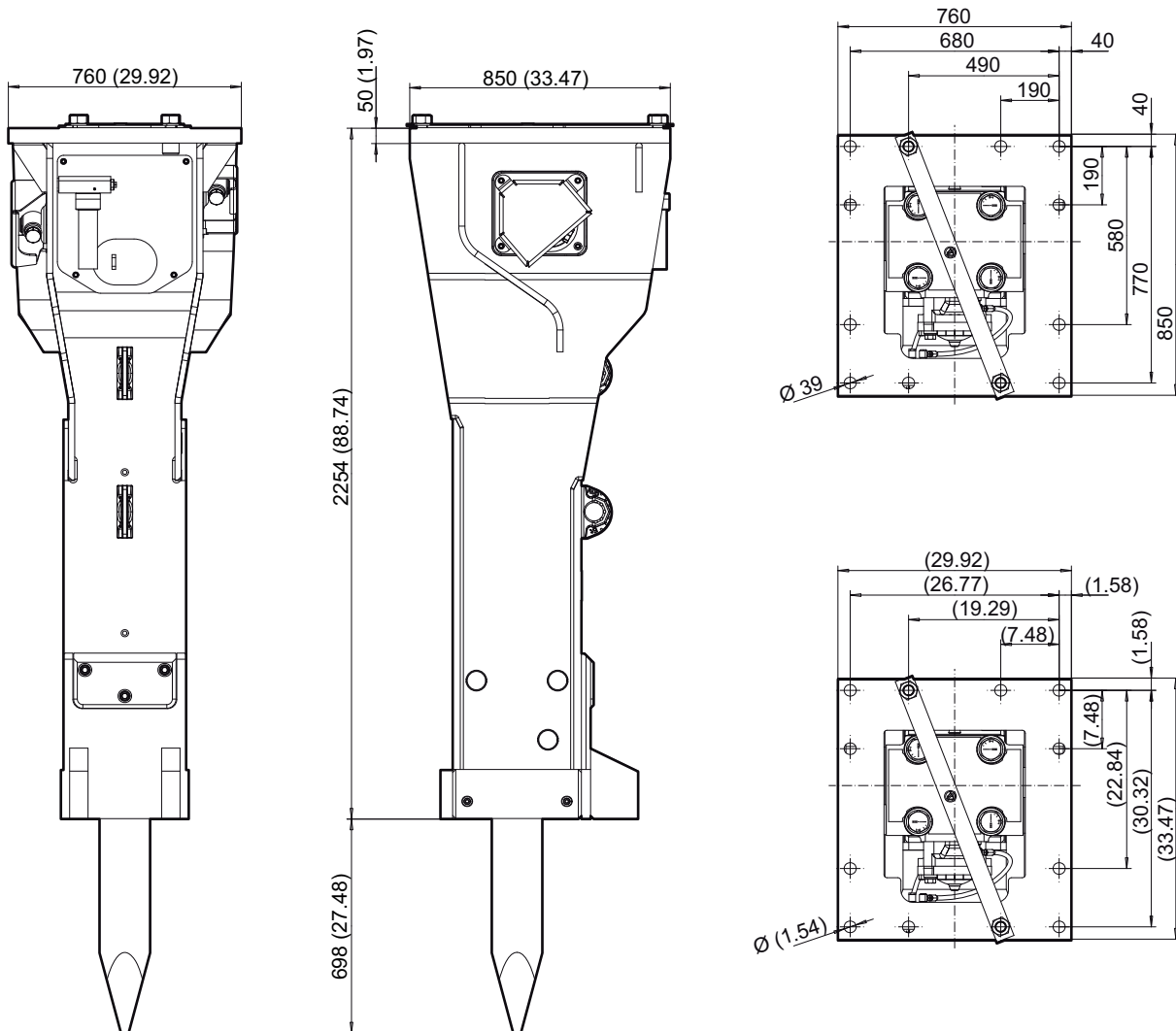
Dimensions HB 3100

mm (inch)



Dimensions HB 3100 DustProtector

mm (inch)





Any unauthorized use or copying of the contents or any part thereof is prohibited.
This applies in particular to trademarks, model denominations, part numbers, and drawings.

© 2013 Atlas Copco Construction Tools GmbH | No. 3390 7477 01 | 2013-03-08

www.atlascopco.com